

NEWSLETTER

LPD Lab Services

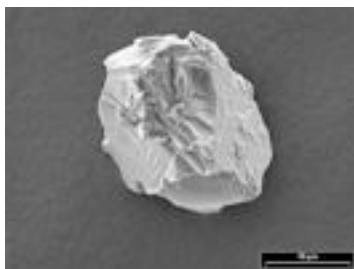
TEL: +44 (0)1254 676 074

One-Stop Shop for Industrial Process Problem Solving, Consulting and Routine Analysis

Welcome to our inaugural newsletter, we intend sending this out on an infrequent basis (maximum 4 or 5 per year) as a means of keeping you up to date with capabilities, services and news at LPD Labservices.

Contaminant Analysis

LPD has extensive experience of analysis and identification of contamination issues in wide range of industrial sectors. We can work to isolate and identify contamination as well as offer problem containment and elimination support directly from our findings.



Particles can have many sources e.g. metals, biological (skin, hair etc), polymers, building dusts etc and all have characteristic properties such as shape, size and chemistry which assist in identification. [SEM / EDX](#) coupled with optical microscopy provides a powerful tool for unambiguously identifying such particles. The technique is frequently coupled with [FTIR](#) when identifying the source of organic contamination.

We can perform this work on virtually any sample types including:

- ★ Liquid samples - suspended particles and particulates
- ★ Filters / membranes
- ★ Product surfaces
- ★ Particles in laminate material stacks

Please [contact us](#) if you have a problem (e.g. particles, organics etc) and we will be able to respond quickly and competently to solve your problem.

Importing Goods?

If you are an importer of goods from outside the EU either to sell directly or to use in manufacturing you will no doubt be aware of issues such as product recalls concerning banned substances and quality issues.

Here at LPD we have extensive experience of the legislation coupled with analysing and testing a wide variety of products to ensure they conform to relevant requirements (e.g. RoHS or internal specifications).

This can be performed on a reactive basis e.g. when product is thought to be incorrect, as a spot

check against supplier quality documentation or, for complete piece of mind, it can be done on a quality control basis on all incoming batches - Please contact us for further information for a no-obligation quotation.

Website Update

We have recently updated our extensive website to provide further information on the type of work we can perform for customers working in specific industries. Please take a moment to have a look around the site and see our capabilities at:

www.lpdlabservices.co.uk



New member of staff joins the team

Mike Ellicott joined the lab in October and you may have already had contact with him. Mike is working with Ben and Steve on the customer facing side of the business handling incoming enquiries, generating quotes and sending reports out to customers in addition to consultancy activities and analytical work. Mike brings a great deal of additional experience in industrial chemistry (from Wolstenholmes and Whitbread) to the group and we believe he is a strong compliment to the existing team.